



Welcome!

Economic Development Investor Social 2023-2025

Building ECONOMIC SUCCESS Together

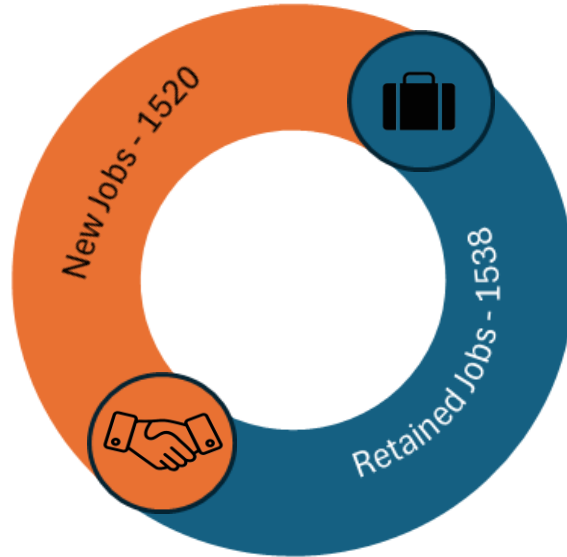


ECONOMIC DEVELOPMENT
COMMUNITY INVESTMENT
CAMPAIGN
2023-2025



Economic Development Activity

LEAP AND EDCMC SUCCESSES BETWEEN 2022-2024



BR&E VISITS

LEAP
174

EDCMC
82

ECONOMIC DEVELOPMENT ACTIVITY

During the past three years, through the support of Investors, much has been accomplished in creating new jobs and investment, as well as, retaining existing jobs in La Porte and Michigan City. LEAP and EDCMC collaborate with their economic development PARTNERS in achieving their successes.

- La Porte and Michigan City Councils
- La Porte and Michigan City Redevelopment Commissions
- NIPSCO
- Indiana Economic Development Corporation (IEDC)
- Northwest Indiana Forum
- Regional Development Company
- Center of Workforce Innovations/NW IN Workforce Board
- Indiana Small Business Development Center (ISBDC)
- Michigan City Chamber of Commerce
- La Porte County Office of Economic Development
- La Porte County Convention and Visitors Bureau
- SCORE



200,000 SF GAF Materials building in Michigan City

Business Attraction

Funds raised will be used to market & promote LaPorte & Michigan City as the ***premier*** locations of choice for new & existing businesses.

Maintain information on local, regional & state demographics & incentives.

Interact with Chicago area, regional, and local commercial/industrial realtors & brokers

Process new prospect leads from the Indiana Economic Development Corporation (IEDC)

Northwest Health La Porte
Hospital



Michigan City Train Station
+
Apartments





Tubekraft, LLC



D. Martin Enterprises

Retention & Expansion

Ensure existing businesses in La Porte & Michigan City are recognized & served by:

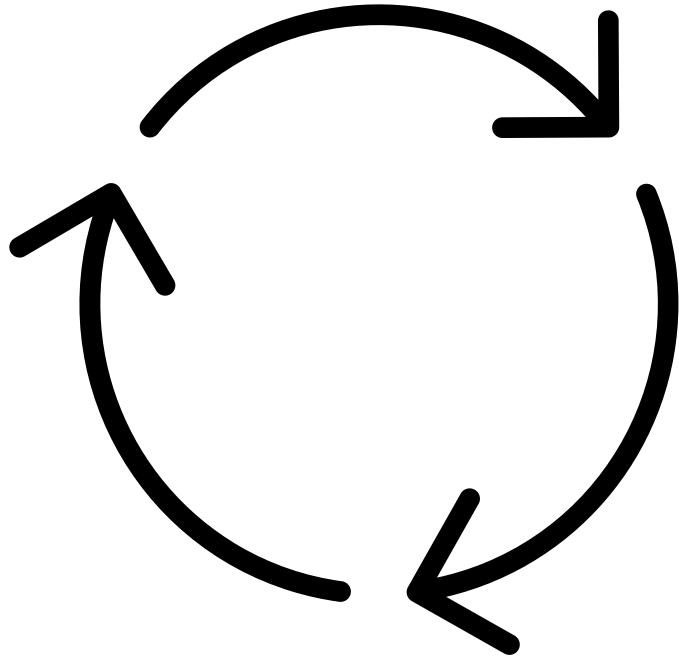
- Identifying concerns/problems and providing effective solutions
- Connect executives with programs that can strengthen their company
- Liaise between local government & businesses
- Assist with workforce/training needs & incentives



Special Programs

- Develop “shovel” ready properties
- Investors highlighted as preferred vendors
- Host site selector professionals
- Conduct business appreciation events and BRE visits
- Assist with brownfields and redevelopment projects

Circle of Investors



Investors are placed on a Preferred Vendor List posted on both the **LEAP** and **EDCMC** websites

Receive updated information on the progress of the Program of Action

Invited to Circle of Investors receptions



BUILDING ECONOMIC SUCCESS

2022-2024 Achievements



23

Projects



794

Retained
Jobs



573

New Jobs



\$1,116,640,000

Capital Investments

For more information about LEAP, contact Bert Cook at 219.324.8584



2025 ECONOMIC DEVELOPMENT INVESTMENT FUND

Dear Community Investor,

As a business owner or manager, you understand the need for community economic development and how everyone wins when any company opens or expands operations. By engaging with local businesses and attracting new investments, we enhance our communities. Both EDCMC (Economic Development Corporation of Michigan City) and LEAP (La Porte Economic Advancement Partnership) have partnered for 25+ years to better position both communities as locations for investment and growth. Please consider becoming an investor by making a 3-year pledge toward the funding of this unique partnership. Through your financial investment LEAP and EDCMC play key roles in ensuring successful projects, as well as advancing the revitalizations of both cities' downtowns.

2025 Economic Development Investment Fund

COMPANY _____ CONTACT/TITLE _____
ADDRESS _____ CITY/STATE/ZIP _____
EMAIL _____ PHONE _____

INVESTMENT LEVELS

Palladium	\$15,000+
Platinum	\$10,000+
Diamond	\$7,500+
Gold	\$5,250+
Silver	\$2,750+
Bronze	\$1,250+

ANNUAL AMOUNT

THREE YEAR TOTAL

\$45,000+
\$30,000+
\$22,500+
\$15,750+
\$8,250+
\$3,750+



AMOUNT OF YOUR INVESTMENT: ANNUAL \$ _____ THREE YEAR TOTAL \$ _____
SIGNATURE _____ DATE _____

Make tax deductible checks payable to:
Unity Foundation of La Porte County, ED Investment Fund, 422 Franklin St., Suite C, Michigan City, IN 46360. For more information contact EDMC: 219.873.1211 LEAP: 219.324.8584



Chipotle

- \$2.3M capital investment to build a popular multi-national, fast casual chain.
- Provided approximately 30 jobs with competitive benefits.
- As a part of the project the City of La Porte plans to build a kayak launch and public parking for the recreational amenity.



NIPSCO Training Facility



- \$15M capital investment in the West side of La Porte.
- The building was expanded to house a new welding training program, while the current square footage used for training linemen and other skilled positions was renovated.

Qualls Spec Building #2

- Quincy Development constructed a new 150,000 sq. ft. industrial speculative development in the Thomas Rose Industrial Park.
- \$8M capital investment to build.
- This development follows closely on the heels of the company's first spec building which was built right next door in 2020.





The Drift

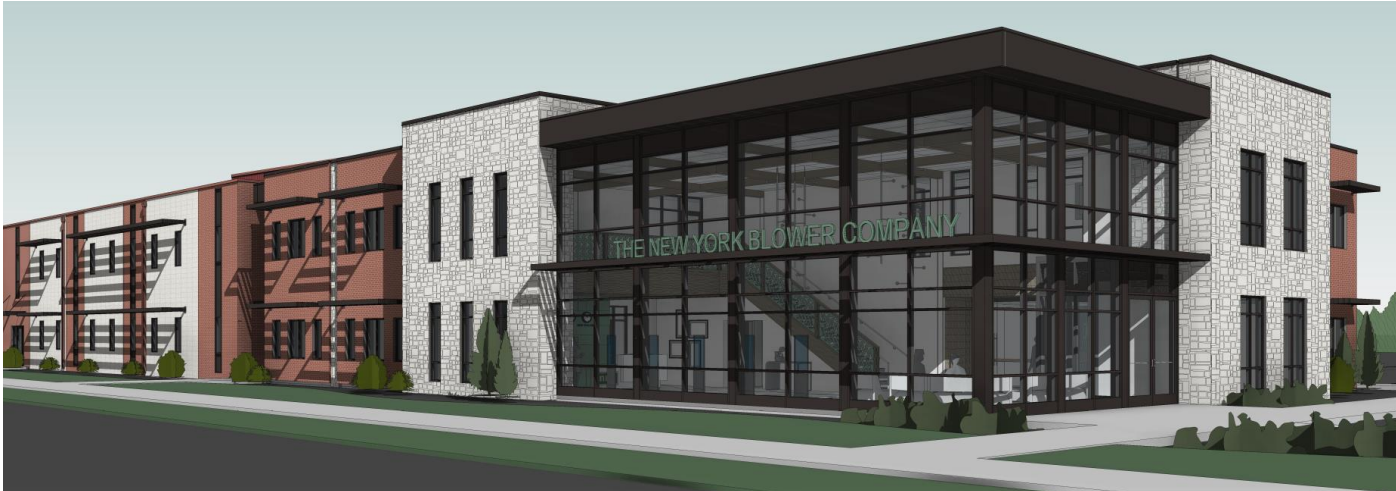
- \$6M capital investment to construct a new fine dining restaurant on Pine Lake.
- The development represents a 7,100 sq. ft. restaurant with 3 levels and numerous vista views of Pine Lake.
- The menu consists of elevated lakeside dining options and paired cocktails.

Microsoft

- Microsoft announced plans to invest \$1B in the City of La Porte to build a new data center campus along Boyd Boulevard.
- The facility will result in the hiring of 200 new employees upon completion.
- This economic development project, one of the largest in the State, was completed in partnership with the Indiana Economic Development Corporation.



New York Blower Company



- \$5M capital investment to build a new 14,000 sq. ft. professional office building increasing capacity and better connecting office teammates at the plant.
- Local builder, Larson-Danielson Construction Company, is the general contractor on the project.
- The company is also investing in a new green space in front of the plant that will pay homage to the company's history in the City of La Porte.

Dental Studio of Pine Lake

- \$2.5M capital investment to build a new dental office in the New Porte Landing area.
- The development will result in the hiring of 20 new employees upon completion.





Bella Largo Senior Living Facility

- \$16M capital investment to build and equip a senior living facility along 39 North.
- 50 Full-Time jobs will be created.
- The facility will consist of 30 assisted living units and 30 memory care units.



BUILDING ECONOMIC SUCCESS

2022-2024 Achievements



38

Projects



744

Retained
Jobs



947

New Jobs



\$602,352,000

Capital Investments

For more information about EDCMC, contact Clarence Hulse at 219.873.1211



2025 ECONOMIC DEVELOPMENT INVESTMENT FUND

Dear Community Investor,

As a business owner or manager, you understand the need for community economic development and how everyone wins when any company opens or expands operations. By engaging with local businesses and attracting new investments, we enhance our communities. Both EDCMC (Economic Development Corporation of Michigan City) and LEAP (La Porte Economic Advancement Partnership) have partnered for 25+ years to better position both communities as locations for investment and growth. Please consider becoming an investor by making a 3-year pledge toward the funding of this unique partnership. Through your financial investment LEAP and EDCMC play key roles in ensuring successful projects, as well as advancing the revitalizations of both cities' downtowns.

2025 Economic Development Investment Fund

COMPANY _____ CONTACT/TITLE _____
ADDRESS _____ CITY/STATE/ZIP _____
EMAIL _____ PHONE _____

INVESTMENT LEVELS

Palladium	\$15,000+
Platinum	\$10,000+
Diamond	\$7,500+
Gold	\$5,250+
Silver	\$2,750+
Bronze	\$1,250+

ANNUAL AMOUNT

THREE YEAR TOTAL

\$45,000+
\$30,000+
\$22,500+
\$15,750+
\$8,250+
\$3,750+

AMOUNT OF YOUR INVESTMENT:

ANNUAL \$ _____

THREE YEAR TOTAL \$ _____

SIGNATURE _____

DATE _____

Make tax deductible checks payable to:

Unity Foundation of La Porte County, ED Investment Fund, 422 Franklin St., Suite C, Michigan City, IN 46360. For more information contact EDMC: 219.873.1211 LEAP: 219.324.8584



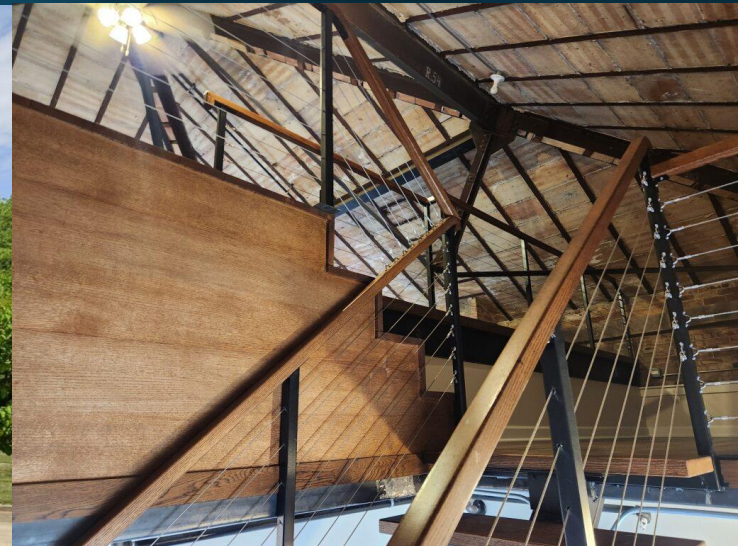
Completed Projects



\$1.3 Million



Old Washington Deli
AirBnb
700 SF Retail



Casa del Libri

Original Michigan City Library
→
5 Luxury Apartments

\$1.5 Million



Completed Projects



**Mid-City
Supply**
\$4 Million



**F.H.
Paschen**
\$250,000

**Dalton
Enterprises**
\$1.5 Million



Kabelin Ace
\$1.2 Million



Completed Projects



HealthLinc
\$15 Million



Raising Cane's
\$7 Million

Chicago Title
\$100,000



Chick-fil-A
\$6 Million



PERSPECTIVE VIEW



PERSPECTIVE VIEW



PERSPECTIVE VIEW



PERSPECTIVE VIEW

Completed Projects



Cellar Door - \$1 Million



Rocco's - \$500,000



The Heron Bistro - \$500,000

Projects In-Process



Woodland Ridge

- 32 Acre New Home Development
- 113 Single Family Homes
- 1,250-2,400 SF
- Starting at \$295,000
- Phase 1 = 33 homes



First 100+ lot subdivision in 50 years

Projects In-Process



The Moore

45 Luxury Townhomes on US Hwy 12
Projected Start Date – Fall 2025

\$18 Million Investment

Projects In-Process



Singing Sands Suites

Michigan Blvd.

- Mixed-Use + Workforce
- 300 Units
- Approx. \$75 Million Investment

*Childcare facilities, playground, pool, public promenade
+ canoe access to Trail Creek*

Projects In-Process



Tryon Meadow

128 Rental Units
38 Single Family Units
56 Townhomes

\$44 Million Investment

5th & Pine



\$300 Million Estimated Capital Investment

- At Least 500 Apartments
- Urban Grocery Store
- Eight-Story Tower
- Preferred Developer Selected
- 500 Units
- 40,000 SF Urban Grocery
- Possible Hotel
- Affordable + Active Senior Housing



Vibrant Michigan City



Class on Fall 2024

Michigan City Neighborhood Leadership Academy

8-10 Week program that empowers residents to become active leaders within their individual neighborhoods. 55 graduates to-date.



Class on Summer 2025

ARPA Small Business Assistance Grant

Assisted 35 Small businesses in mitigating the negative effects of COVID-19

Total Grant Funding	\$ 703,680.00
Funded Apps	35
Disqualified Apps	8
Total Applications	43

Ball State Community Development Course

Community leaders learned how to tackle challenges in a comprehensive & creative way in order to thrive.





Mayor Tom Dermody
La Porte



Mayor Angie Nelson Deutch
Michigan City

**THANK YOU FOR INVESTING
IN THE FUTURE OF
LA PORTE AND MICHIGAN CITY!**



219.324.8584
www.laportepartnership.com



219.873.1211
www.edcmc.com

*BUILDING ECONOMIC
SUCCESS TOGETHER*



BUILDING ECONOMIC SUCCESS

2022-2024 Achievements



23

Projects



794

Retained
Jobs



573

New Jobs



\$1,116,640,000

Capital Investments

For more information about LEAP, contact Bert Cook at 219.324.8584



2025 ECONOMIC DEVELOPMENT INVESTMENT FUND

Dear Community Investor,

As a business owner or manager, you understand the need for community economic development and how everyone wins when any company opens or expands operations. By engaging with local businesses and attracting new investments, we enhance our communities. Both EDCMC (Economic Development Corporation of Michigan City) and LEAP (La Porte Economic Advancement Partnership) have partnered for 25+ years to better position both communities as locations for investment and growth. Please consider becoming an investor by making a 3-year pledge toward the funding of this unique partnership. Through your financial investment LEAP and EDCMC play key roles in ensuring successful projects, as well as advancing the revitalizations of both cities' downtowns.

2025 Economic Development Investment Fund

COMPANY _____ CONTACT/TITLE _____
ADDRESS _____ CITY/STATE/ZIP _____
EMAIL _____ PHONE _____

INVESTMENT LEVELS

Palladium	\$15,000+
Platinum	\$10,000+
Diamond	\$7,500+
Gold	\$5,250+
Silver	\$2,750+
Bronze	\$1,250+

ANNUAL AMOUNT

THREE YEAR TOTAL

\$45,000+
\$30,000+
\$22,500+
\$15,750+
\$8,250+
\$3,750+



AMOUNT OF YOUR INVESTMENT: ANNUAL \$ _____ THREE YEAR TOTAL \$ _____
SIGNATURE _____ DATE _____

Make tax deductible checks payable to:
Unity Foundation of La Porte County, ED Investment Fund, 422 Franklin St., Suite C, Michigan City, IN 46360. For more information contact EDMC: 219.873.1211 LEAP: 219.324.8584



Chipotle

- \$2.3M capital investment to build a popular multi-national, fast casual chain.
- Provided approximately 30 jobs with competitive benefits.
- As a part of the project the City of La Porte plans to build a kayak launch and public parking for the recreational amenity.



NIPSCO Training Facility



- \$15M capital investment in the West side of La Porte.
- The building was expanded to house a new welding training program, while the current square footage used for training linemen and other skilled positions was renovated.

Qualls Spec Building #2

- Quincy Development constructed a new 150,000 sq. ft. industrial speculative development in the Thomas Rose Industrial Park.
- \$8M capital investment to build.
- This development follows closely on the heels of the company's first spec building which was built right next door in 2020.





The Drift

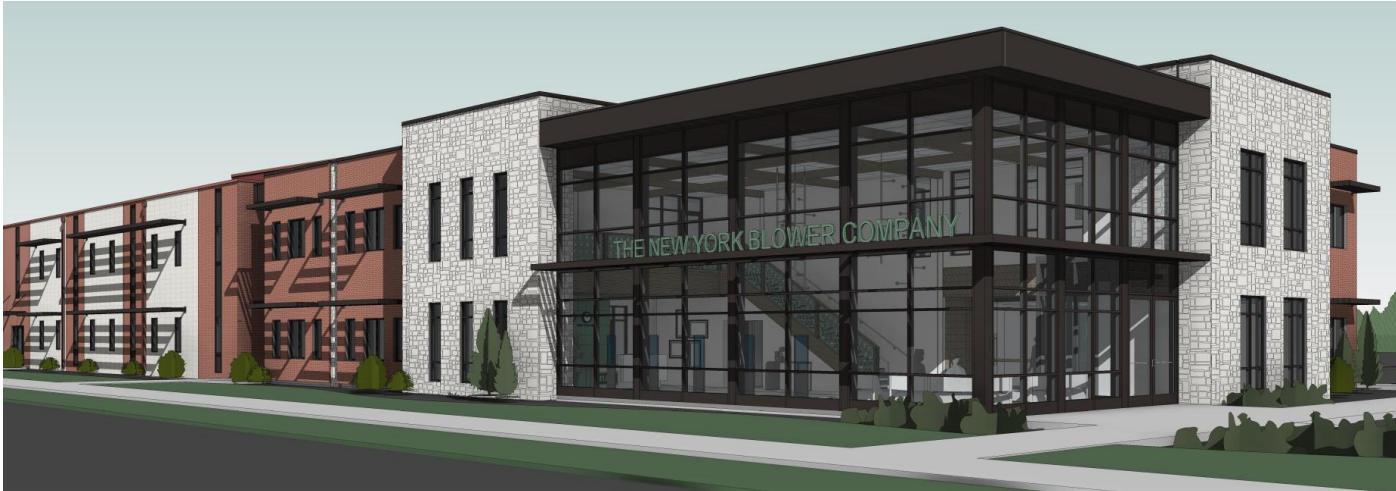
- \$6M capital investment to construct a new fine dining restaurant on Pine Lake.
- The development represents a 7,100 sq. ft. restaurant with 3 levels and numerous vista views of Pine Lake.
- The menu consists of elevated lakeside dining options and paired cocktails.

Microsoft

- Microsoft announced plans to invest \$1B in the City of La Porte to build a new data center campus along Boyd Boulevard.
- The facility will result in the hiring of 200 new employees upon completion.
- This economic development project, one of the largest in the State, was completed in partnership with the Indiana Economic Development Corporation.



New York Blower Company



- \$5M capital investment to build a new 14,000 sq. ft. professional office building increasing capacity and better connecting office teammates at the plant.
- Local builder, Larson-Danielson Construction Company, is the general contractor on the project.
- The company is also investing in a new green space in front of the plant that will pay homage to the company's history in the City of La Porte.

Dental Studio of Pine Lake

- \$2.5M capital investment to build a new dental office in the New Porte Landing area.
- The development will result in the hiring of 20 new employees upon completion.





Bella Largo Senior Living Facility

- \$16M capital investment to build and equip a senior living facility along 39 North.
- 50 Full-Time jobs will be created.
- The facility will consist of 30 assisted living units and 30 memory care units.



BUILDING ECONOMIC SUCCESS

2022-2024 Achievements



38

Projects



744

Retained
Jobs



947

New Jobs



\$602,352,000

Capital Investments

For more information about EDCMC, contact Clarence Hulse at 219.873.1211



2025 ECONOMIC DEVELOPMENT INVESTMENT FUND

Dear Community Investor,

As a business owner or manager, you understand the need for community economic development and how everyone wins when any company opens or expands operations. By engaging with local businesses and attracting new investments, we enhance our communities. Both EDCMC (Economic Development Corporation of Michigan City) and LEAP (La Porte Economic Advancement Partnership) have partnered for 25+ years to better position both communities as locations for investment and growth. Please consider becoming an investor by making a 3-year pledge toward the funding of this unique partnership. Through your financial investment LEAP and EDCMC play key roles in ensuring successful projects, as well as advancing the revitalizations of both cities' downtowns.

2025 Economic Development Investment Fund

COMPANY _____ CONTACT/TITLE _____
ADDRESS _____ CITY/STATE/ZIP _____
EMAIL _____ PHONE _____

INVESTMENT LEVELS

Palladium	\$15,000+
Platinum	\$10,000+
Diamond	\$7,500+
Gold	\$5,250+
Silver	\$2,750+
Bronze	\$1,250+

ANNUAL AMOUNT

THREE YEAR TOTAL

\$45,000+
\$30,000+
\$22,500+
\$15,750+
\$8,250+
\$3,750+

AMOUNT OF YOUR INVESTMENT:

ANNUAL \$ _____

THREE YEAR TOTAL \$ _____

SIGNATURE _____

DATE _____

Make tax deductible checks payable to:

Unity Foundation of La Porte County, ED Investment Fund, 422 Franklin St., Suite C, Michigan City, IN 46360. For more information contact EDMC: 219.873.1211 LEAP: 219.324.8584



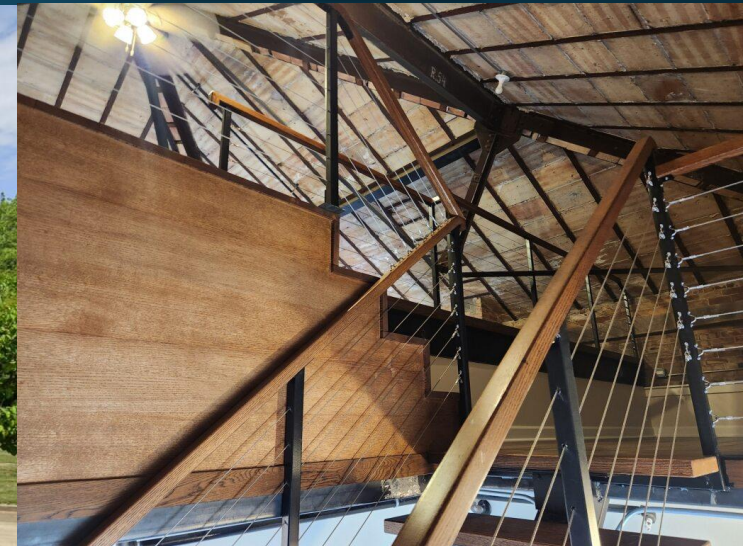
Completed Projects



\$1.3 Million



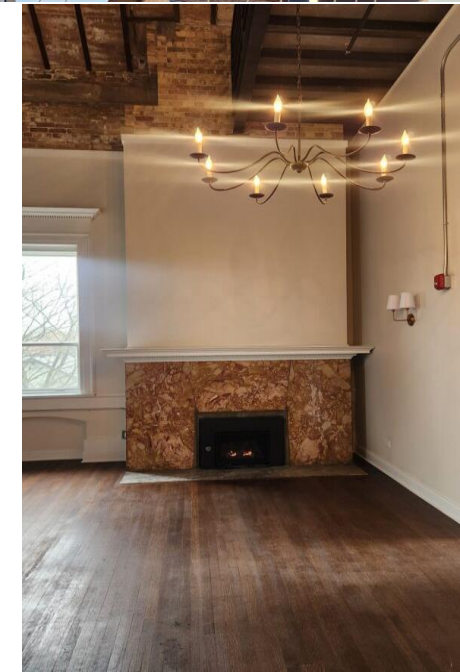
Old Washington Deli
AirBnb
700 SF Retail



Casa del Libri

Original Michigan City Library
→
5 Luxury Apartments

\$1.5 Million



Completed Projects



**Mid-City
Supply**
\$4 Million



**F.H.
Paschen**
\$250,000

**Dalton
Enterprises**
\$1.5 Million



Kabelin Ace
\$1.2 Million



Completed Projects



HealthLinc
\$15 Million



Raising Cane's
\$7 Million

Chicago Title
\$100,000



Chick-fil-A
\$6 Million



PERSPECTIVE VIEW



PERSPECTIVE VIEW



PERSPECTIVE VIEW



PERSPECTIVE VIEW

Completed Projects



Cellar Door - \$1 Million



Rocco's - \$500,000

The Heron Bistro - \$500,000



Projects In-Process



Woodland Ridge

- 32 Acre New Home Development
- 113 Single Family Homes
- 1,250-2,400 SF
- Starting at \$295,000
- Phase 1 = 33 homes



First 100+ lot subdivision in 50 years

Projects In-Process



The Moore

45 Luxury Townhomes on US Hwy 12
Projected Start Date – Fall 2025

\$18 Million Investment

Projects In-Process



Singing Sands Suites

Michigan Blvd.

- Mixed-Use + Workforce
- 300 Units
- Approx. \$75 Million Investment

*Childcare facilities, playground, pool, public promenade
+ canoe access to Trail Creek*



Projects In-Process



Tryon Meadow

128 Rental Units
38 Single Family Units
56 Townhomes

\$44 Million Investment

5th & Pine



\$300 Million Estimated Capital Investment

- At Least 500 Apartments
- Urban Grocery Store
- Eight-Story Tower
- Preferred Developer Selected
- 500 Units
- 40,000 SF Urban Grocery
- Possible Hotel
- Affordable + Active Senior Housing



Vibrant Michigan City



Class on Fall 2024

Michigan City Neighborhood Leadership Academy

8-10 Week program that empowers residents to become active leaders within their individual neighborhoods. 55 graduates to-date.



Class on Summer 2025

ARPA Small Business Assistance Grant

Assisted 35 Small businesses in mitigating the negative effectives of COVID-19

Total Grant Funding	\$ 703,680.00
Funded Apps	35
Disqualified Apps	8
Total Applications	43

Ball State Community Development Course

Community leaders learned how to tackle challenges in a comprehensive & creative way in order to thrive.





Mayor Tom Dermody
La Porte



Mayor Angie Nelson Deutch
Michigan City

**THANK YOU FOR INVESTING
IN THE FUTURE OF
LA PORTE AND MICHIGAN CITY!**



219.324.8584
www.laportepartnership.com



219.873.1211
www.edcmc.com

*BUILDING ECONOMIC
SUCCESS TOGETHER*