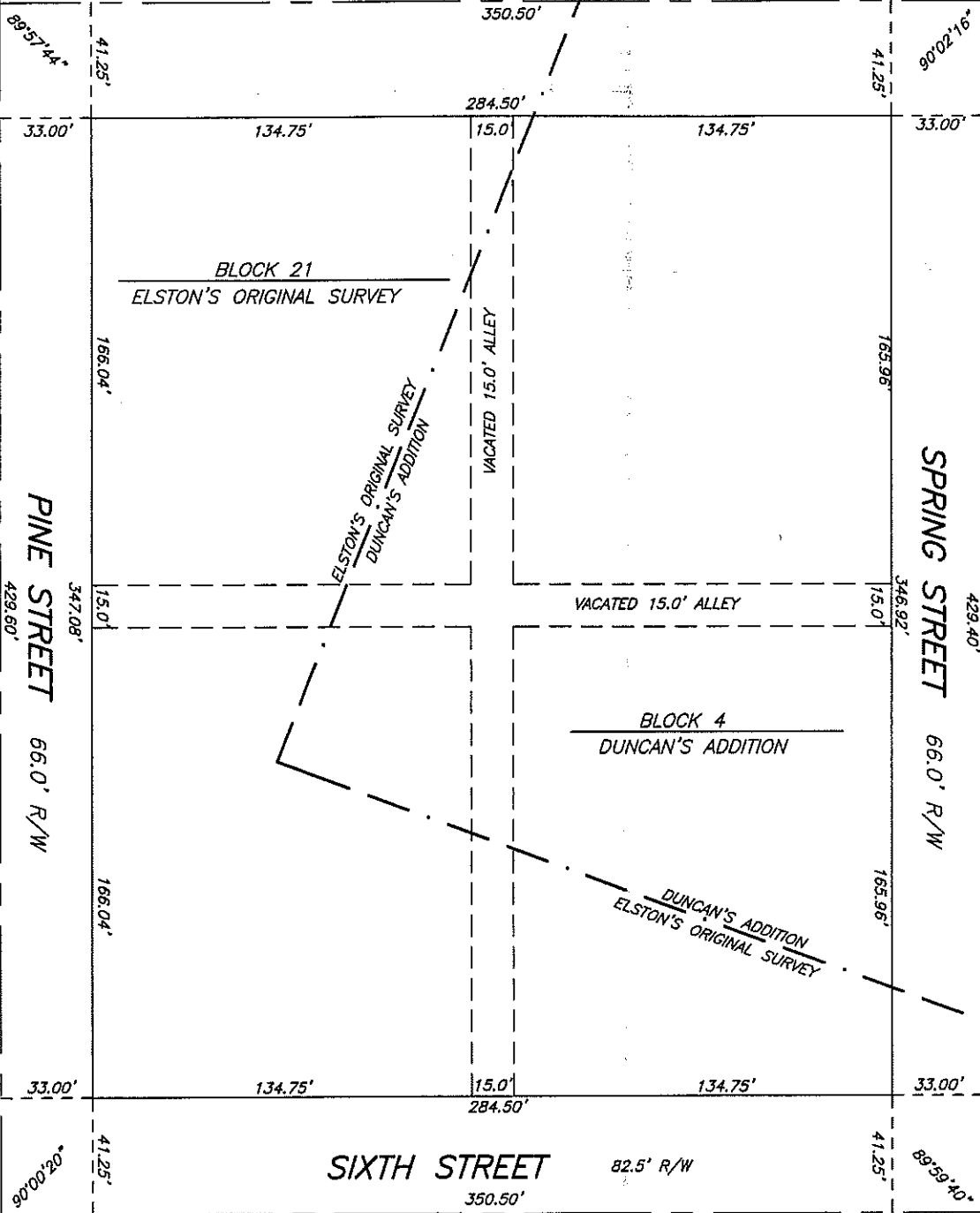


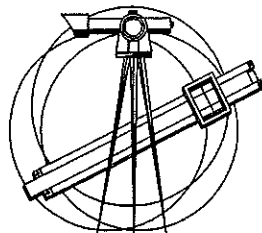
FIFTH STREET

82.5' R/W



SCALE 1"=60'

FEBRUARY 25, 2014



**JOHN A. DOYLE** & ASSOCIATES  
 INCORPORATED  
 2322 E. MICHIGAN BLVD., MICHIGAN CITY, INDIANA

PLAT

FRACTIONAL BLOCK 21 IN ELSTON'S ORIGINAL SURVEY AND  
 FRACTIONAL BLOCK 4 IN DUNCAN'S ADDITION  
 ALL IN MICHIGAN CITY, LAPORTE COUNTY, INDIANA